



Watch Video

# Agri Slurry Tanker

## Farmer Specification

These tankers are available in capacities from 1500 to 2000 gallons. There is a detachable parking stand and PTO holder fitted as standard. All MAJOR tankers are constructed from 6mm steel for maximum strength. The axle is a heavy duty agricultural spec axle.

To comply with applicable legislation, the 1700 agri model is fitted with a safety breakaway cable.

The LGP models have hydraulic brakes as standard ensuring compliance with the regulations for this model of tanker.

Rubber buffers are fitted as standard on the drawbar to give a smoother and safer journey. These tankers are galvanized as standard.



		
<b>Tyre</b>	<b>550/60/22.5</b>	<b>21.3 R24</b>
<b>W (mm)</b>	550	540
<b>D (mm)</b>	1170	1400

**1700 Std**      •      •

		
<b>Tyre</b>	<b>28.1 R26 Nortec</b>	<b>800/65/R32 Nortec 181</b>
<b>W (mm)</b>	740	798
<b>D (mm)</b>	1780	1820

**1500 LGP**      •      •

**1700 LGP**      •      •

**2000 LGP**      •      •



The joints on the tank are welded to ensure a high-quality and visually perfect weld seam.



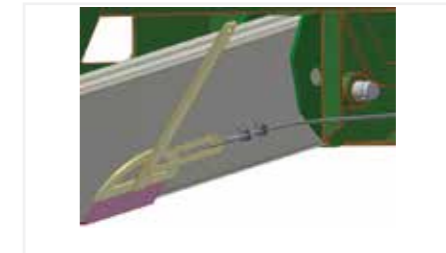
All Major tankers are galvanized inside and out for durability and long life.



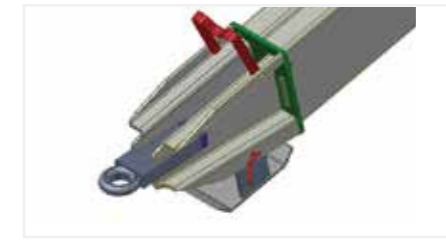
Hydraulic brakes as standard ensuring compliance with the regulations for this model of tanker



Drawbar is fitted with rubber buffers to give a smoother and safer journey



Fitted with safety breakaway cable for safer use on public highways.



Detachable parking stand and PTO holder

Model	Tyre options	Capacity		OA Length (Hitch to coupling ball)	OA Width (Depends on tyre)	OA Height Hitch @ 450mm	Wheel Recess	Weight (Kg)	
		Gallon	Litres					Empty	Full
<b>1700 Agri</b>	550/60/22.5	1,685	7,660	6.4m	2.6m	2.9m	No	2,550	10,210
	21.3 R24	1,685	7,660	6.4m	2.6m	3.0m	No	2,550	10,210
<b>1500 LGP Ag</b>	28.1 R26 Nortec	1,485	6,750	6.0m	2.6m	3.0m	YES	2,994	9,744
	800/65/R32 Nortec 181	1,420	6,455	6.0m	2.6m	3.0m	YES	3,150	9,605
<b>1700 LGP Ag</b>	28.1 R26 Nortec	1,610	7,319	6.4m	2.6m	3.0m	YES	3,330	10,649
	800/65/R32 Nortec 181	1,610	7,319	6.4m	2.6m	3.0m	YES	3,330	10,649
<b>2000 LGP Ag</b>	28.1 R26 Nortec	1,920	9,271	6.6m	2.6m	3.2m	YES	3,540	12,811
	800/65/R32 Nortec 181	1,920	9,271	6.6m	2.6m	3.2m	YES	3,540	12,811

